



HEALTH EQUITY THROUGH INTERSECTORAL ACTION

Identifying What Works To Improve Collaboration Across Sectors To Address Common Societal Challenges

INTER-SECTORAL HEALTH ENVIRONMENT RESEARCH FOR INNOVATIONS (INHERIT) CONSORTIUM COORDINATED BY EUROHEALTHNET (229)

THE CHALLENGES

- **People in lower socio-economic groups experience cumulative inequalities** related to income levels, social determinants, consumption opportunities and the environments in which they live. They suffer the most from the consequences of pollution and environmental change and often benefit least from measures taken to address these problems. In turn, income and wealth inequalities undermine health and sustain health inequalities.
- **Major influences distributing health inequities are located outside the health sector.** Health inequalities refer to differences in health caused by the conditions in which we are born, grow, live, work and age. While 1/4 of global non-communicable disease burden and more than 1/3 of the burden among children are due to modifiable environmental and lifestyle factors, the world's biggest threats are environmental risks.
- **Experiences in intersectoral work for health have shown that such cooperation is not self-evident and examples are lacking,** especially with a targeted approach to low-income socio-economic groups. For more holistic and cost-effective approaches in policy making and practice, public health can unite different sectors and societal actors through the 'Health In All Policies' approach.

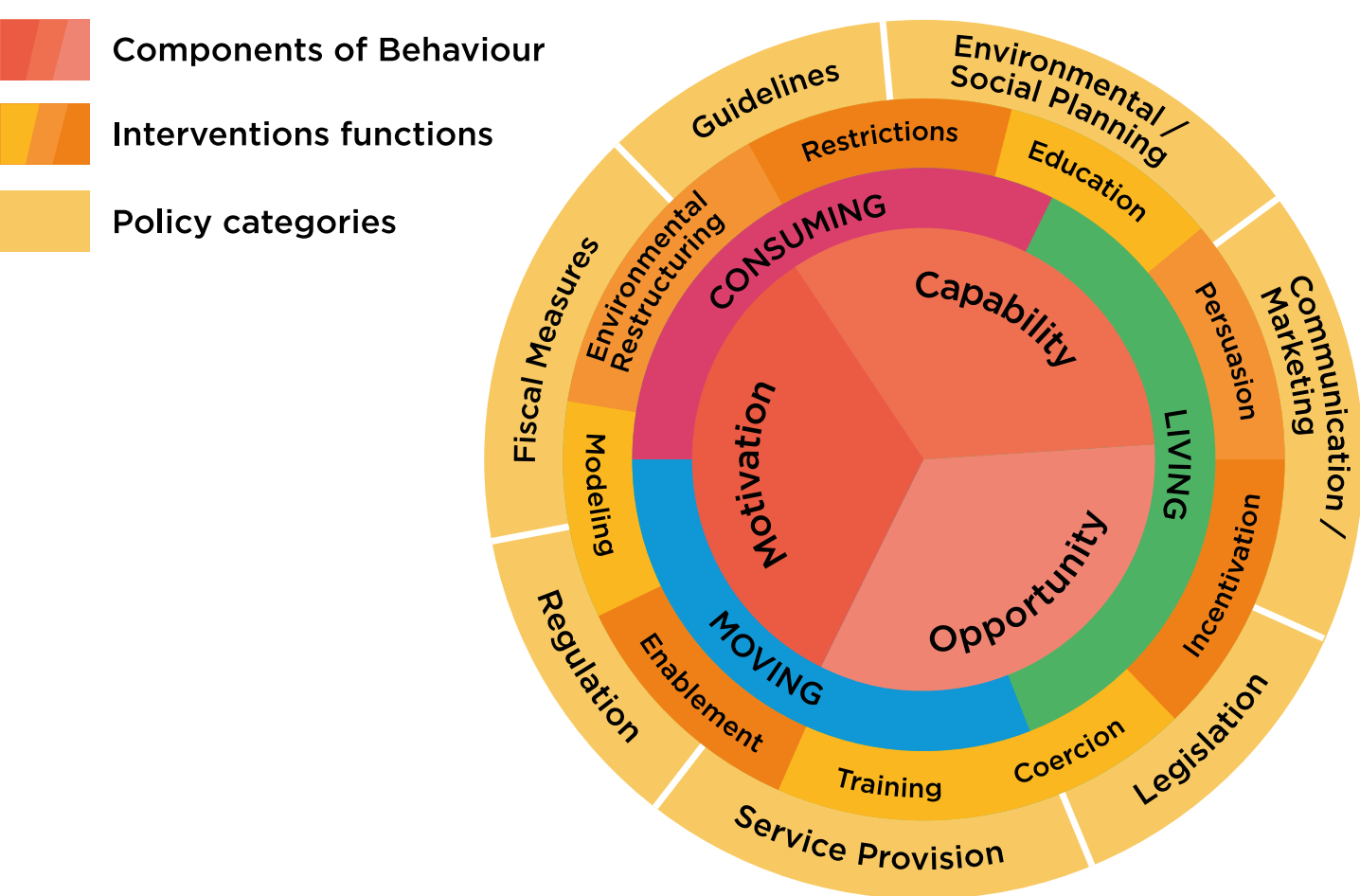
SEE OUR OUTCOMES IN PROGRESS!

- Our **baseline review** defines and identifies the triple-win.
- Between 2016 and 2017, close to **100 triple-win promising practices** were included in our database.
- In 2018, **15 INHERIT studies** will assess existing initiatives, through qualitative, quantitative and cost-benefit evaluations.
- 13 qualitative evaluations will conduct appreciative inquiries, with focus groups interviews with implementers, policy makers and citizens, to collect insights on **success factors and barriers of intersectoral collaboration for health equity** across Europe.
- An **INHERIT roadmap** identifies effective policy interventions promoting healthier, more equitable and environmentally sustainable European societies.
- Bringing it together for policy makers and health sector professionals in 2019: by integrating evidence, examples and models of good practice, citizens insights, roundtable discussions, the project outcomes will support the development of **a policy and investment kit for intersectoral health leadership.**

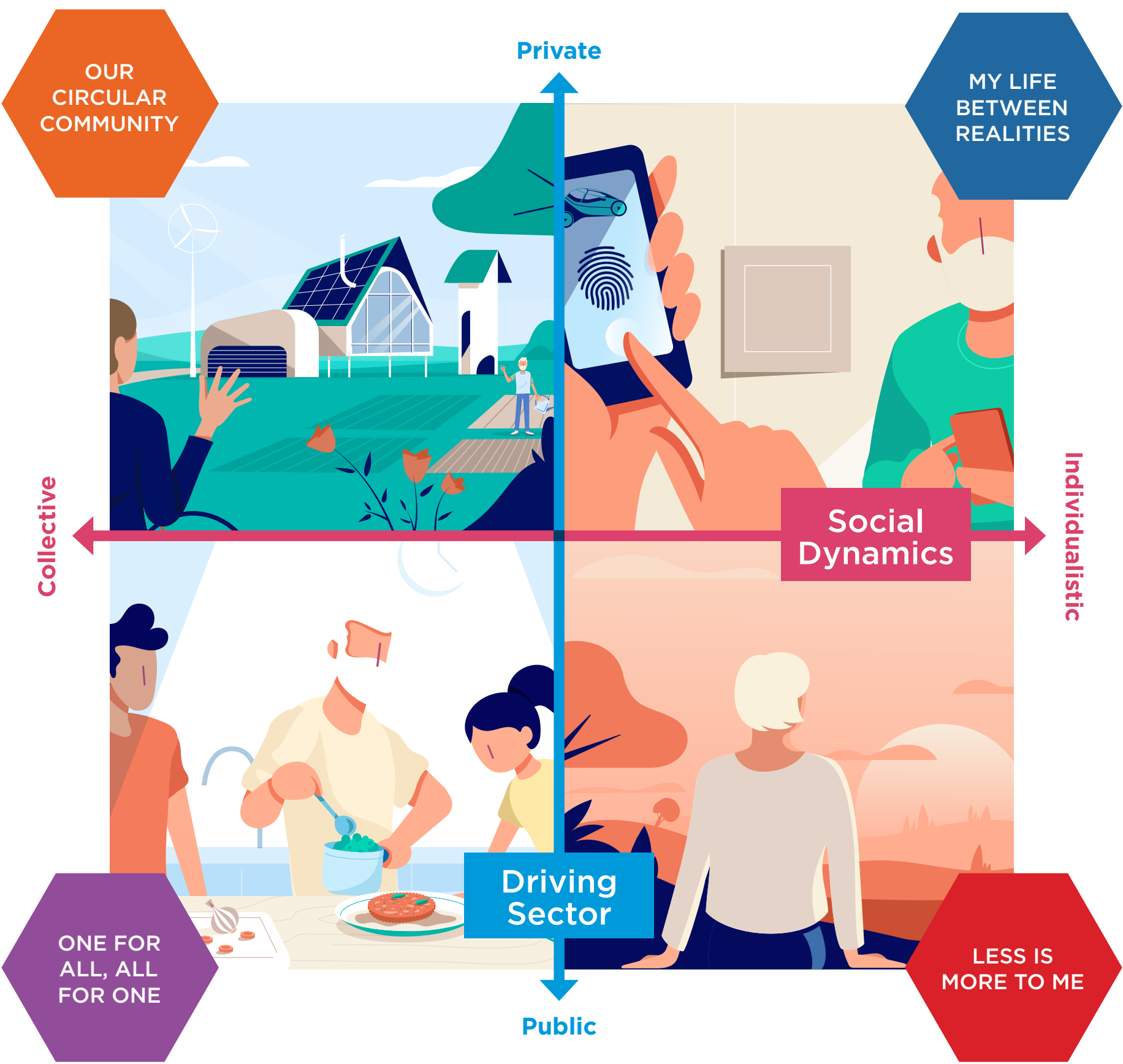
DESCRIPTION

- **Our research identifies, evaluates and promotes intersectoral policy interventions enabling sustainable lifestyles across the social gradient.** We focus on policies and practices that contribute to a 'triple-win' for health, the environment and equity, and encourage the wider implementation of such initiatives.
- **We address the 'take, make, consume, dispose' model of growth by looking at key environmental factors, related inequities and the role of behaviour.** Our conceptual framework includes a behavior change wheel and the impact of complex environments and policies.
- **Our research formulates evidence-based models of good practice and scenarios in three focus areas:** living (green spaces in cities and energy efficient housing) ; moving (active transport) ; food consumption (sustainable diets). Our policy visioning of what we want for the future, and what can be achieved is translated in four sustainable scenarios for 2040.

The Behavioral Change Wheel:



The 4 INHERIT Scenarios:

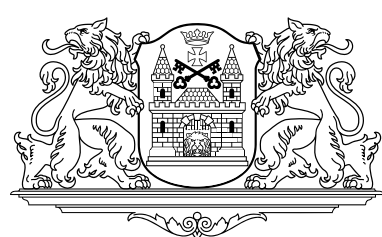


Do you have evidence, a promising practice or question?

Visit www.inherit.eu
@inheritEU

Subscribe to our newsletter

Apply to our call for publications for the Special Issue in the International Journal of Environmental Research and Health on 'A More Sustainable and Healthier Future for All: What Works?'



The INHERIT project gathers 18 partners in 12 countries to implement a four year European project (2016-2019)



The INHERIT project (www.inherit.eu), coordinated by EuroHealthNet, has received funding from the European Union's Horizon 2020 research and innovation programme under grant agreement N° 667364.