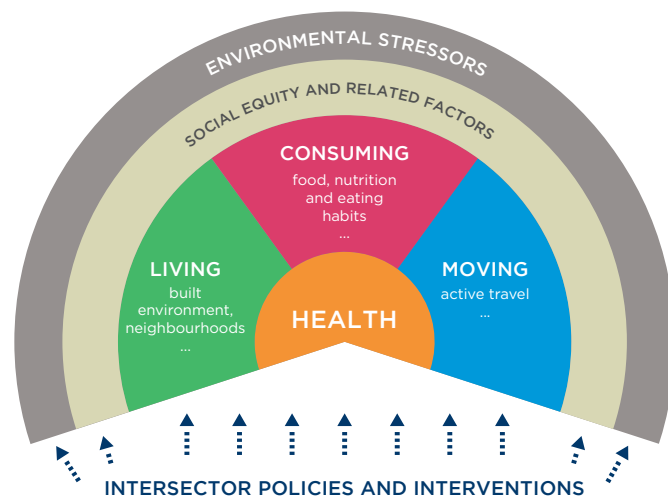


ABOUT INHERIT

INHERIT is about stimulating effective policies, practices and innovations that address **key environmental stressors** and promote **health equity** and **wellbeing**.

This Horizon 2020 research project aims to encourage us to modify our current lifestyles, characterised by a 'take, make, consume, dispose' model of growth, to formulate scenarios for a more sustainable future, and to design, implement and test inter-sectoral initiatives to achieve the desired change.



CONSORTIUM PARTNERS



CONTACT

The 18-partner INHERIT consortium is coordinated by EuroHealthNet

EuroHealthNet Office
Rue de la Loi 67
B-1040 Brussels
Tel : +32 2 235 0320



INHERIT

inheritEU

www.inherit.eu

Identifying ways of living, moving and consuming that protect the environment and promote health and health equity.

www.inherit.eu



The INHERIT project (www.inherit.eu), coordinated by EuroHealthNet, has received funding from the European Union's Horizon 2020 research and innovation programme under grant agreement No 667364.



LIVING

**INHERIT YOUR FUTURE.
WHERE YOU LIVE MATTERS**

Over 50% of humans live in urban areas and by 2020 an estimated 80% of Europeans will live in cities

Analysing environmental stressors and the social gradient in health, the INHERIT Consortium is investigating policies, interventions and innovations that promote the sustainable use of urban spaces or encourage us to adopt behaviours that can lead to cleaner air, reduce noise and improve physical and mental health.

MOVING

**INHERIT YOUR FUTURE.
HOW YOU MOVE MATTERS**

Carbon emissions from motorised transport could increase by 50% in 2050

Building on a multi-sectoral approach, the INHERIT consortium is researching the health equity implications of environmental stressors in public transport trends and infrastructure, urban design and logistics planning, as well as cultural norms and economic aspects of different modes of mobility.

CONSUMING

**INHERIT YOUR FUTURE.
WHAT YOU EAT MATTERS**

Meat production accounts for 80% of agricultural CO₂ emissions (causing 1/3 of global emissions)

Aspiring to present more sustainable scenarios to modify some alarming trends in food production and consumption, the INHERIT consortium is looking at what factors motivate consumers to buy the food they do and what tipping points could lead to changing societal behaviours.

**BASELINE
REVIEW &
ANALYSIS**

**COMMON
ANALYTICAL
FRAMEWORK**

**50 PROMISING
PRACTICES**

**12 PILOT
PROJECTS**

**IMPACT
ASSESSMENT**

**POLICY
KIT**



HEALTH



EQUITY



ENVIRONMENT